

Dona Mara Friedman

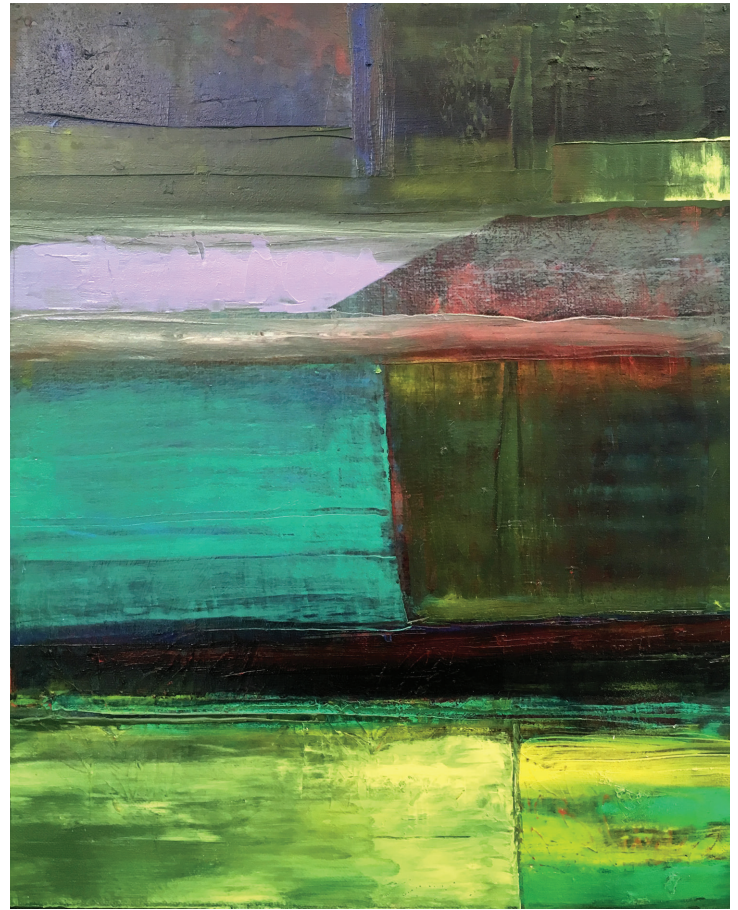
Rupert, VT

dona-mara.com

donamaradesigns@gmail.com

Statement

The most recent paintings are dealing with planes of space that convey implied places of interest, beauty and wonder. Often a painting begins as I glimpse a particular textural field through a screened or rainy window. A visceral desire to connect to nature, learning to change and flow through seasons with light, color, texture and form, guides my choices. The abstraction of objects allows an emotional element to take precedent, granting the viewer freedom to react in their own very individual way without reference. The suggestion and ambiguity without representation creates a simplicity which I strive for. A continued hope is that the viewer is drawn into the work, finding a resting place, or a human connection.



Dona Mara Friedman, *Shifting Light*, 16x20, 2016

Bio

Dona Mara is a painter with a 40 year exploration in two dimensional space and surface. Her paintings are infused with an abstracted vision of nature and an individual field of color, line and texture. Thematically she is moved by the cycles of nature and the horizontal, vertical break up of space; translating movement, light and texture into a sense of place. She exhibits regularly in the regional Northeast and is included in numerous private collections throughout the U.S. “Breaking New Ground, Making Great Art” by Elayne Clift, in Vermont Magazine included Mara as one of eight VT Women artists who shared innovative work grounded in a love of nature, respect for life cycles and joy of creation.